

CODE	MODEL	TYPE	POWER SUPPLY	SERIES
10492009	M9FRG20YF	FRYER	GAS	MILO 900

DESCRIPTION

FAST GAS FRYER 1 "Y" SHAPED TANK 20L

TECHNICAL DATA

Gas power (kW)	21,0
Electric power (kW)	0.01
Standard voltage* (kW)	220-230 V ~
N° of cooking zones	1x21kW
N° of tanks	1x20lt
IPX Protection Grade (mm)	IPX4

DIMENSIONS DATA

Product dimensions (mm)	400W x 900 P x 900 H
Net weight (kg)	94
Gross weight (kg)	107
Packaging dimensions (m3)	430 x 972 x 1264
Packaging volume (m3)	0.53



CONSTRUCTIONAL FEATURES

Worktop made of 2mm-thick AISI 304 stainless steel with Scotch Brite finish. Control panel, side panels and back panel in 1mm thick AISI 304 stainless steel with Scotch Brite finish. Precise juxtaposition of worktops ensuring maximum hygiene. Stainless steel brackets are provided as standard, allowing the appliances to be effectively fixed side by side (optional gasket). Sloping back guard with built-in exhaust grate and removable steel closing grid. Adjustable feet made of AISI 304 stainless steel with scratch-resistant sole made of insulating plastic material. Foot extension 60mm, standard worktop height 900mm (minimum 895, maximum 955).

TECHNICAL FEATURES

Molded, Y-shaped cooking tank made of AISI 304 stainless steel, without welds and with widely radiused edges for the purpose of easier and more effective cleaning. Large cold zone for stabilization of cooking residues. Straight, large-diameter (Ø38mm - Ø1.5inch) bottom oil drain with front tap facilitating draining operations. Technical compartment completely closed by AISI 304 stainless steel panel to prevent dirty infiltration. Heating by high-performance stainless steel tubular burners placed outside the cooking tank to optimize heat exchange while preserving the maximum width of the decanting area for impurities released during frying for the benefit of oil protection. Temperature control via electronic board with simple and intuitive interface and digital display, with melting program for gradual melting of the frying medium (oil or animal/vegetable fat). Safety thermostat with manual reset. Safety solenoid valve with thermocouple. Electronic pilot ignition.

Equipped with: 1 basket for versions with 1 tank, 1 basket and 2 half basket for versions with 2 tanks.

Lower compartment closed by AISI 304 stainless steel hinged door, opening to the left, honeycombed and with assisted closing hinges and space-saving ergonomic handle.

CODE	MODEL	TYPE	POWER SUPPLY	SERIES
10492009	M9FRG20YF	FRYER	GAS	MILO 900

DESCRIPTION

FAST GAS FRYER 1 "Y" SHAPED TANK 20L
ACCESSORIES(not included)

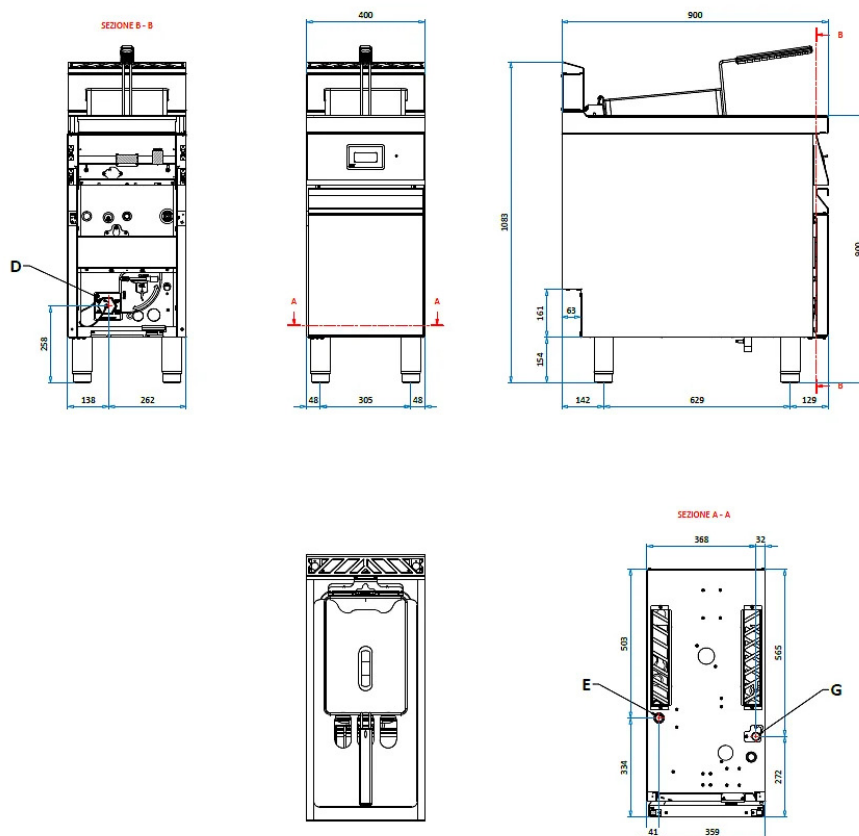
Code	Model	Description
80300254	CF20	FULL BASKET FRYER TANK 20L
20200150	CCF20	FULL BASKET IMMERSION LID FRYER TANK 20L
863058	CF8	FULL BASKET FRYER TANK 8L
80300155	CMF20	HALF BASKET FRYER TANK 20L
20100077	TRO-S9	TROLLEY EQUIPPED WITH FILTER FOR FRYER SERIES 900
20200047	CON-FIL	FILTER CONTAINER FOR FRYER
20100066	F100	100 MICRON FILTER FOR FRYER
863139	BRO-16/17	STAINLESS STEEL OIL COLLECT. T. FOR FRYER 16/17L
388003	FRY-DET	DETERGENT FRYER 1 BOX - 6 BOTTLES/1LITERS
80300047	FFV20	BOTTOM TANK FILTER - FRYER 20L
80300165	GRID-FV20	GRID FOR 20LT CAPACITY FRYER
892052	GLOSIL	SILICONE GLOVE
891952	SPAT	SPATULA FOR FRYER CLEANING
20100591	LID-FV20	LID FOR 20LT CAPACITY FRYER
60200678	DEF-FV20	DEFLECTOR FOR 20LT CAPACITY GAS FRYER

CODE	MODEL	TYPE	POWER SUPPLY	SERIES
10492009	M9FRG20YF	FRYER	GAS	MILO 900

DESCRIPTION

FAST GAS FRYER 1 "Y" SHAPED TANK 20L

TECHNICAL DRAWING



CONNECTIONS

G = GAS	3/4" G
E = ELECTRIC	220-230 V ~
S = DRAIN	1" 1/2 G