

CODE	MODEL	TYPE	POWER SUPPLY	SERIES
10691006	M9CPE90CL	PASTA COOKER	ELECTRIC	MILO 900

DESCRIPTION

ELECTRIC PASTA COOKER 2 TANKS WITH LEVEL CONTROL AND AUTOMATIC LOADING SYSTEM
TECHNICAL DATA

Electric power (kW)	18
Standard voltage* (kW)	380-415 V 3 N ~
N° of cooking zones	2x9,0kW
N° of tanks	2x45lt
IPX Protection Grade (mm)	IPX4

DIMENSIONS DATA

Product dimensions (mm)	800W x 900 P x 900 H
Net weight (kg)	97
Gross weight (kg)	117
Packaging dimensions (m3)	845 x 972 x 1264
Packaging volume (m3)	1.04


CONSTRUCTIONAL FEATURES

Worktop made of 2mm-thick AISI 304 stainless steel with Scotch Brite finish. Control panel, side panels and back panel in 1mm thick AISI 304 stainless steel with Scotch Brite finish. Precise juxtaposition of worktops ensuring maximum hygiene. Stainless steel brackets are provided as standard, allowing the appliances to be effectively fixed side by side (optional gasket). Sloping back guard with built-in exhaust grate and removable steel closing grid. Adjustable feet made of AISI 304 stainless steel with scratch-resistant sole made of insulating plastic material. Foot extension 60mm, standard worktop height 900mm (minimum 895, maximum 955).

TECHNICAL FEATURES

AISI 316 stainless steel, seamless tank with widely radiused edges for the purpose of easier and more effective cleaning. Front area with sloped, perforated top for supporting baskets during water draining operations. Tungsten heating elements outside the tank. Power adjustment with 3-position selector switch. Two-way solenoid valve for loading and maintaining the water level in the tank, stainless steel front spout. As standard, fully automatic level control by solenoid valve: in case of lack of water, heating is inhibited. Ø1" drain tap with ergonomic handle, lower compartment fully closed by AISI 304 stainless steel paneling for maximum hygiene. Ergonomic, athermic control knobs with built-in operating LED.

Baskets not included.

Lower compartment closed by AISI 304 stainless steel, hinged doors with assisted closing hinges and space-saving ergonomic handle.

ACCESSORIES(not included)

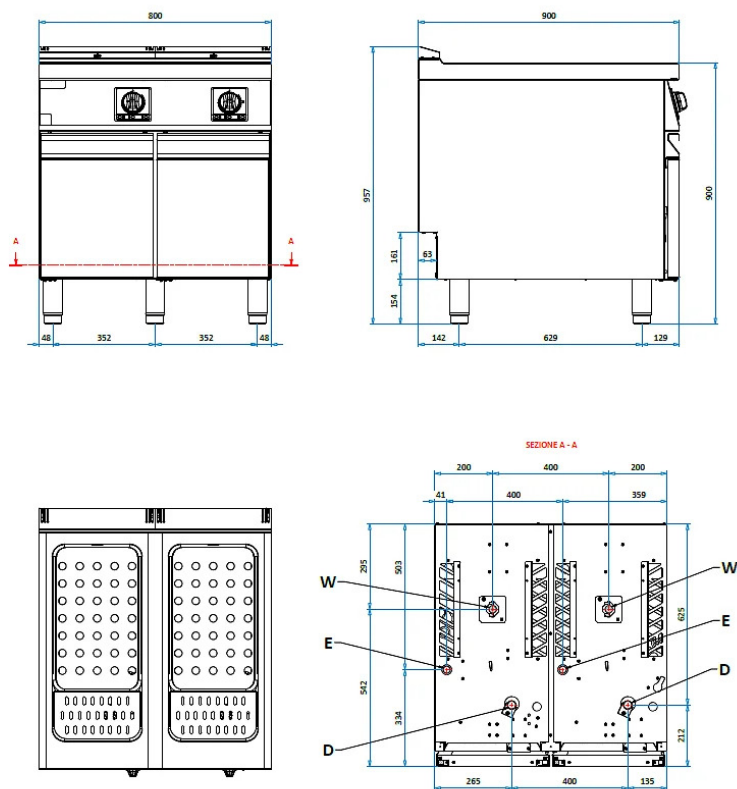
Code	Model	Description
861103	GNI/1	BASKET PASTAC. GNI/1 H215
861116	GN2/3	BASKET PASTAC. GN2/3 H215
861122	GNI/2	BASKET PASTAC. GNI/1 H215
861130	GNI/3	BASKET PASTAC. GNI/3 H215
861172	GN2/9	BASKET PASTAC. GN2/9 H215
861142	GNI/6DX	BASKET PASTAC. GNI/6 H215
861146	GNI/6SX	BASKET PASTAC. GNI/6 H215
861152	GNI/6	BASKET PASTAC. GNI/6 H215 Ø153
388002	OFF-CAL	DESCALING DETERGENT OFF-CAL 1 BOX - 12 BOTTLES/LITER

CODE	MODEL	TYPE	POWER SUPPLY	SERIES
10691006	M9CPE90CL	PASTA COOKER	ELECTRIC	MILO 900

DESCRIPTION

ELECTRIC PASTA COOKER 2 TANKS WITH LEVEL CONTROL AND AUTOMATIC LOADING SYSTEM

TECHNICAL DRAWING



CONNECTIONS

E = ELECTRIC	380-415 V 3 N ~
W = WATER INLET	3/4" G
S = DRAIN	1" G