

CODE	MODEL	TYPE	POWER SUPPLY	SERIES
10672003	M7CPG60	PASTA COOKER	GAS	MILO 700

DESCRIPTION

GAS PASTA COOKER 2 TANKS
TECHNICAL DATA

Gas power (kW)	20,0
N° of cooking zones	2x10,0kW
N° of tanks	2x30lt
IPX Protection Grade (mm)	IPX4

DIMENSIONS DATA

Product dimensions (mm)	800W x 730 P x 900 H
Net weight (kg)	108
Gross weight (kg)	128
Packaging dimensions (m3)	845 x 972 x 1264
Packaging volume (m3)	1.04


CONSTRUCTIONAL FEATURES

Worktop made of 2mm-thick AISI 304 stainless steel with Scotch Brite finish. Control panel, side panels and back panel in 1mm thick AISI 304 stainless steel with Scotch Brite finish. Precise juxtaposition of worktops ensuring maximum hygiene. Stainless steel brackets are provided as standard, allowing the appliances to be effectively fixed side by side (optional gasket). Sloping back guard with built-in exhaust grate and removable steel closing grid. Adjustable feet made of AISI 304 stainless steel with scratch-resistant sole made of insulating plastic material. Foot extension 60mm, standard worktop height 900mm (minimum 895, maximum 955).

TECHNICAL FEATURES

AISI 316 stainless steel, seamless tank with widely radiused edges for the purpose of easier and more effective cleaning. Front area with sloped, perforated top for supporting baskets during water draining operations. Stainless steel burners with stabilized flame, valve tap with pilot flame and thermocouple, piezoelectric pilot ignition. Water loading via Ø ½" stainless steel AISI 316 ball valve conforming to the highest international standards for food contact, or "...C" version with automatic loading system via two-way solenoid valve for the rapid loading and the maintaining of the water level in the tank. AISI 304 stainless steel front spout, Ø1" drain tap with ergonomic handle, lower compartment completely closed by AISI 304 stainless steel panelling for maximum hygiene. Ergonomic and athermic adjustment knobs.

Basket not included.

Lower compartment closed by AISI 304 stainless steel, hinged doors with assisted closing hinges and space-saving ergonomic handle.

ACCESSORIES(not included)

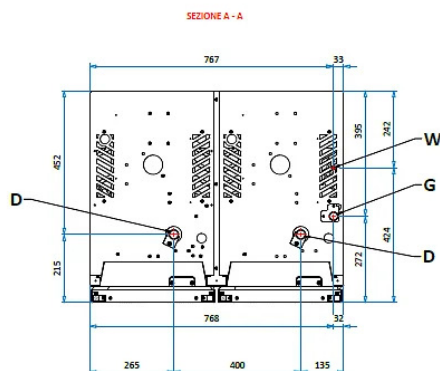
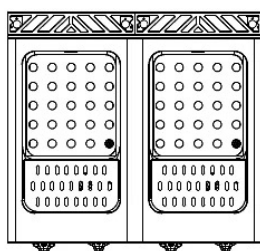
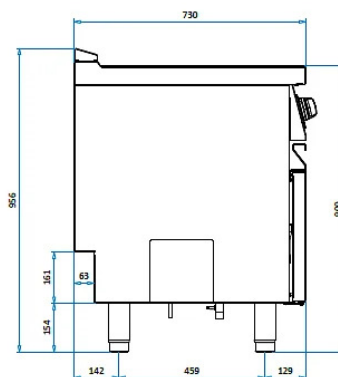
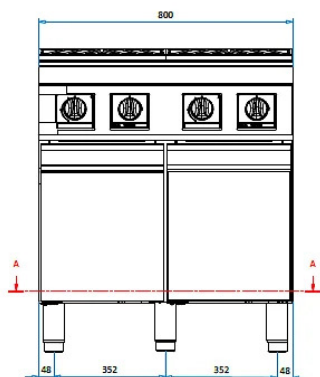
Code	Model	Description
861122	GNI/2	BASKET PASTAC. GNI/1 H215
861116	GN2/3	BASKET PASTAC. GN2/3 H215
861130	GNI/3	BASKET PASTAC. GNI/3 H215
861172	GN2/9	BASKET PASTAC. GN2/9 H215
861142	GNI/6DX	BASKET PASTAC. GNI/6 H215
861146	GNI/6SX	BASKET PASTAC. GNI/6 H215
861152	GNI/6	BASKET PASTAC. GNI/6 H215 Ø153
388002	OFF-CAL	DESCALING DETERGENT OFF-CAL 1 BOX - 12 BOTTLES/ILITER

CODE	MODEL	TYPE	POWER SUPPLY	SERIES
10672003	M7CPG60	PASTA COOKER	GAS	MILO 700

DESCRIPTION

GAS PASTA COOKER 2 TANKS

TECHNICAL DRAWING



CONNECTIONS

G = GAS	3/4" G
W = WATER INLET	Ø 10mm
S = DRAIN	1" G