

CODE	MODEL	TYPE	POWER SUPPLY	SERIES
10172010	M7CBG06	GAS RANGE	GAS	MILO 700

DESCRIPTION

6-BURNER COMMERCIAL GAS RANGE WITH DOUBLE-RING BURNERS AND OPEN BASE
TECHNICAL DATA

Gas power (kW)	36,0
N° of cooking zones	3x7,5kW + 3x4,5KW
IPX Protection Grade (mm)	IPX4

DIMENSIONS DATA

Product dimensions (mm)	1200W x 730 P x 900 H
Net weight (kg)	92
Gross weight (kg)	123
Packaging dimensions (m3)	1267 x 972 x 1264
Packaging volume (m3)	1.56


CONSTRUCTIONAL FEATURES

Worktop made of 2mm-thick AISI 304 stainless steel with Scotch Brite finish. Control panel, side panels and back panel in 1mm thick AISI 304 stainless steel with Scotch Brite finish. Precise juxtaposition of worktops ensuring maximum hygiene. Stainless steel brackets are provided as standard, allowing the appliances to be effectively fixed side by side (optional gasket). Sloping back guard with built-in exhaust grate and removable steel closing grid. Adjustable feet made of AISI 304 stainless steel with scratch-resistant sole made of insulating plastic material. Foot extension 60mm, standard worktop height 900mm (minimum 895, maximum 955).

TECHNICAL FEATURES

Vitrified cast-iron burners with brass double-ring burner cap that provide a diffused flame ideal for uniform cooking due to an increased heat distribution at the bottom of the pot, even large-diameter pots. Valve taps with safety thermocouple. Pilot flame for burner ignition. Thick vitrified cast-iron grids and removable and washable basins under the burners. Venturi Tube with innovative geometry that ensures an optimal combustion efficiency, reducing the possibility of gas nozzle occlusion. Ergonomic and athermic adjustment knobs. Lower open compartment made of AISI 304 stainless steel.

ACCESSORIES(not included)

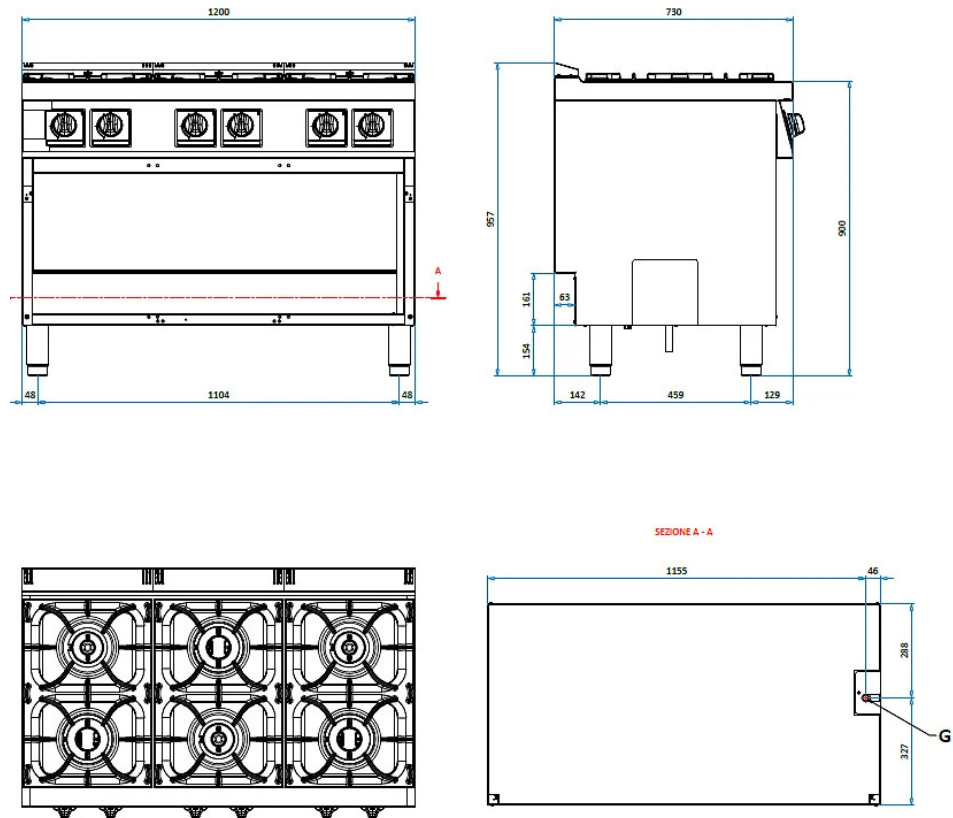
Code	Model	Description	
825885	PAL-71F	SMO. GRID 1 BURNER PAL-71F	(Optional)
825895	PAR-71F	RIB. GRID 1 BURNER PAR-71F	
831607	GCF-9/7	CHROM. OVEN GRID "N" S.900 530X650	
831647	GCFM-9/7	MAXI XL OVEN GRID 700S/980S 645X974	
440109	GV-700	CERAM.GRID 2B. S.70 GV-700 575X395	
20200094	GRP-700	STAINLESS STEEL GRID	
20100589	M7VNC80	M7VNC80 MODULE HEATING	
20100596	M7VNC80-R	M9VNC80-R MODULE HEATING+SHELF	
831733	RID-9/7	REDUC. CHR. GRID RID-9/7	

CODE	MODEL	TYPE	POWER SUPPLY	SERIES
10172010	M7CBG06	GAS RANGE	GAS	MILO 700

DESCRIPTION

6-BURNER COMMERCIAL GAS RANGE WITH DOUBLE-RING BURNERS AND OPEN BASE

TECHNICAL DRAWING



CONNECTIONS

G = GAS

1/2" G