

CODE	MODEL	TYPE	POWER SUPPLY	SERIES
11470002	M7CVE02	CERAMIC PLATES	ELECTRIC	MILO 700

DESCRIPTION

2 ZONES GLASS CERAMIC PLATE ON OPEN STAND
TECHNICAL DATA

Electric power (kW)	5
Standard voltage* (kW)	380-415 V 3 N ~
N° of cooking zones	2x2,5kW
IPX Protection Grade (mm)	IPX4

DIMENSIONS DATA

Product dimensions (mm)	400W x 730 P x 900 H
Net weight (kg)	42
Gross weight (kg)	55
Packaging dimensions (m3)	430 x 972 x 1264
Packaging volume (m3)	0.53


CONSTRUCTIONAL FEATURES

Worktop made of 2mm-thick AISI 304 stainless steel with Scotch Brite finish. Control panel, side panels and back panel in 1mm thick AISI 304 stainless steel with Scotch Brite finish. Precise juxtaposition of worktops ensuring maximum hygiene. Stainless steel brackets are provided as standard, allowing the appliances to be effectively fixed side by side (optional gasket). Sloping back guard with built-in exhaust grate and removable steel closing grid. Adjustable feet made of AISI 304 stainless steel with scratch-resistant sole made of insulating plastic material. Foot extension 60mm, standard worktop height 900mm (minimum 895, maximum 955).

TECHNICAL FEATURES

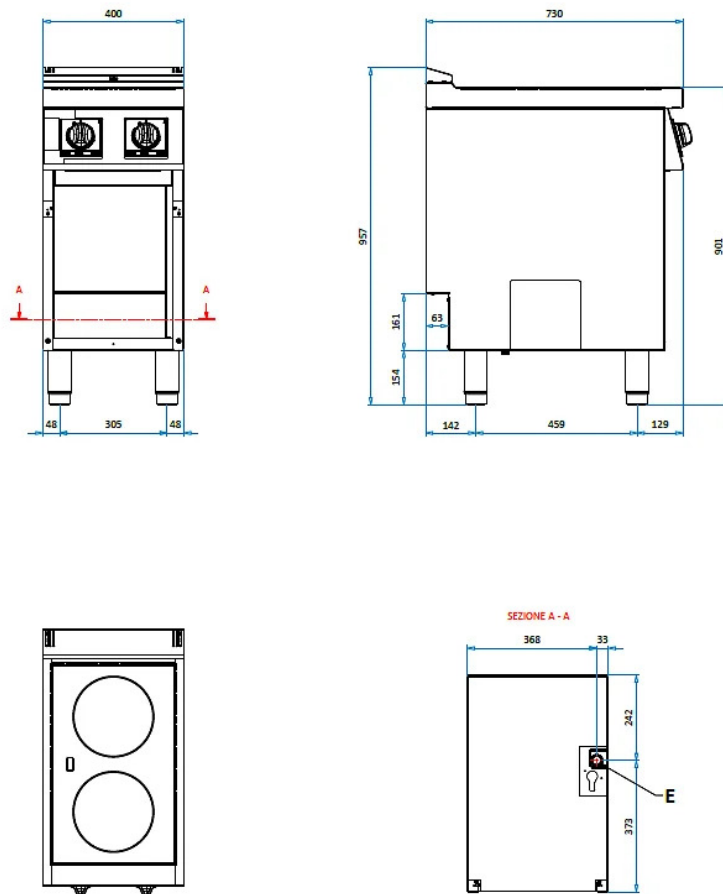
6 mm thick glass ceramic plate, designed for flush alignment with hermetic gasket for easy cleaning. High-performance, tungsten heating elements. Ignition and power regulation by energy regulator. Sensors with glowing glass indicator lights. Ergonomic, athermic control knobs with built-in operating LED. Lower open compartment made of AISI 304 stainless steel.

CODE	MODEL	TYPE	POWER SUPPLY	SERIES
11470002	M7CVE02	CERAMIC PLATES	ELECTRIC	MILO 700

DESCRIPTION

2 ZONES GLASS CERAMIC PLATE ON OPEN STAND

TECHNICAL DRAWING



CONNECTIONS

E = ELECTRIC

380-415 V 3 N ~