

CODE	MODEL	TYPE	POWER SUPPLY	SERIES
<b>10491023</b>	<b>M9FRE40Y-NA</b>	<b>FRYER</b>	<b>ELECTRIC</b>	<b>MILO MARINE 900</b>

## DESCRIPTION

**ELECTRIC FRYER 2 TANKS 20 LT**
**TECHNICAL DATA**

Electric power (kW)	38
Standard voltage* (kW)	400V/3/50-60Hz
N° of cooking zones	2x20lt
N° of tanks	2x20lt

\*Voltage increase available on request: cod.20300031

Electric power (kW)	38
Cooking zones	2x20lt
Voltage (V)	440V/3/50-60Hz

**DIMENSIONS DATA**

Product dimensions (mm)	800W x 900 P x 900 H
Net weight (kg)	108
Gross weight (kg)	128
Packaging dimensions (m3)	845 x 972 x 1264


**TECHNICAL FEATURES**

AISI 304 stainless steel, Y-shaped, molded cooking tank, without welds and with widely rounded corners for easier and more effective cleaning. Large cold zone for the stabilization of cooking residues. Straight, large-diameter (Ø38 mm - Ø1.5 inch) oil drain with front tap for easy emptying. Technical compartment completely closed by AISI 304 stainless steel panelling to prevent the passage of dirt. Heating obtained by an innovative, high-efficiency, flat-geometry tilting heating element, that minimizes energy consumption and it is completely removable from the tank to facilitate cleaning operations. Hook for lifting the heating element provided as standard. Electric safety system that blocks heating in case of opening the drain or lifting the heating element. Cooking temperature managed by electromechanical thermostat. Safety thermostat with manual reset. Ergonomic, athermic control knobs with built-in operating LED. Standard equipment: one full basket for versions with 1 tank, one full basket and two half baskets for versions with 2 tanks.

**ACCESSORIES(not included)**

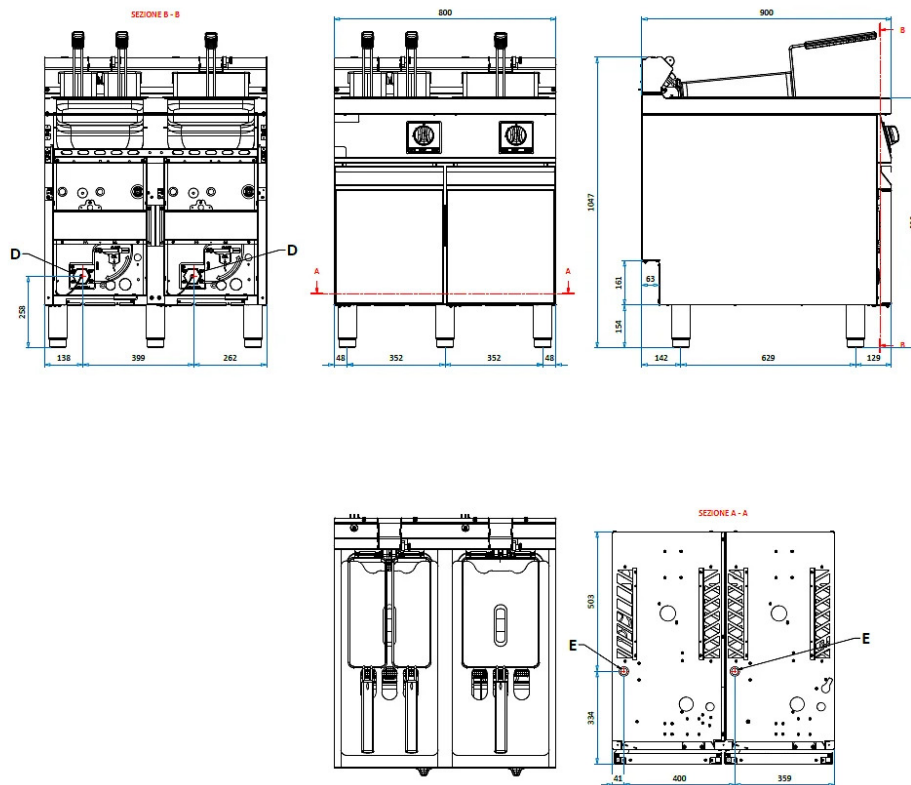
Code	Model	Description
863113	CF15-17	FULL BASKET FRYER TANK 15L
863101	CMF15-17	HALF BASKET FRYER TANK 15L
80300254	CF20	FULL BASKET FRYER TANK 20L
80300155	CMF20	HALF BASKET FRYER TANK 20L
20100073	TRO-S7	TROLLEY EQUIPPED WITH FILTER FOR FRYER SERIES 700
20100077	TRO-S9	TROLLEY EQUIPPED WITH FILTER FOR FRYER SERIES 900
80300018	FFV15	BOTTOM TANK FILTER - FRYER 15L
80300047	FFV20	BOTTOM TANK FILTER - FRYER 20L
80300269	GASK-S7	WATER-TIGHT GASKET FOR S700 MODELS
80300528	GASK-S9	WATER-TIGHT GASKET FOR S900 MODELS

CODE	MODEL	TYPE	POWER SUPPLY	SERIES
<b>10491023</b>	<b>M9FRE40Y-NA</b>	<b>FRYER</b>	<b>ELECTRIC</b>	<b>MILO MARINE 900</b>

DESCRIPTION

**ELECTRIC FRYER 2 TANKS 20 LT**

TECHNICAL DRAWING



CONNECTIONS

E = ELECTRIC	400V/3/50-60Hz
E = ELECTRIC	440V/3/50-60Hz