

CODE	MODEL	TYPE	POWER SUPPLY	SERIES
10191021	M9CQE02-NA	GAS RANGE	ELECTRIC	MILO MARINE 900

DESCRIPTION

ELECTRIC RANGE WITH 2 SQUARE PLATES
TECHNICAL DATA

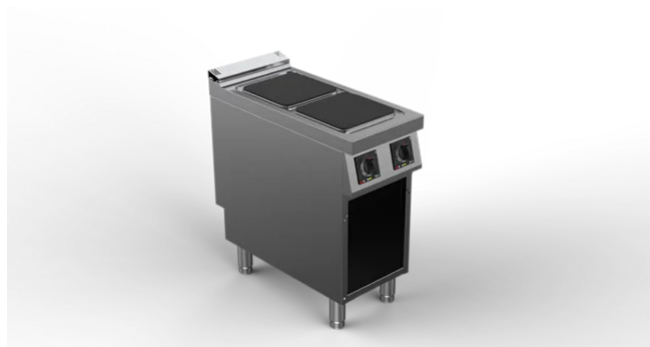
Electric power (kW)	6
Standard voltage* (kW)	400V/3/50-60Hz
N° of cooking zones	2x3kW
IPX Protection Grade (mm)	IPX4

***Voltage increase available on request: cod.20300031**

Electric power (kW)	8
Cooking zones	2x4kW
Voltage (V)	440V/3/50-60Hz

DIMENSIONS DATA

Product dimensions (mm)	400W x 900 P x 900 H
Net weight (kg)	68
Gross weight (kg)	81


TECHNICAL FEATURES

Square cast-iron hotplates (300x300 mm) with 3.0 KW unit power adjustable to 6 operating positions. Water-tight molded plate to prevent dirt infiltration. Height-adjustable AISI 340 stainless steel feet.

ACCESSORIES(not included)

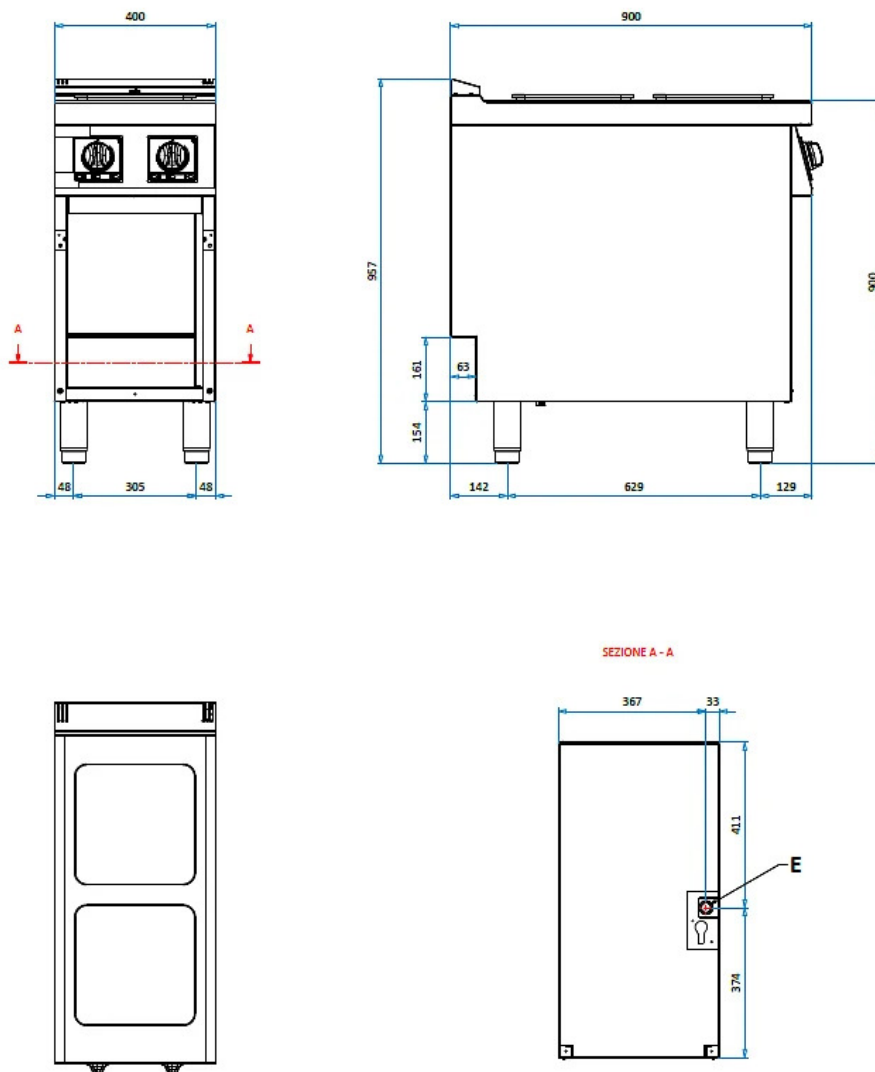
Code	Model	Description
831607	GCF-9/7	CHROM. OVEN GRID "N" S.900 530X650
897125	TE20-2/1	STAINLESS STEEL CONTAINER GN 2/1 530X650X20H
897131	TE40-2/1	STAINLESS STEEL CONTAINER GN 2/1 530X650X40H
897135	TE65-2/1	STAINLESS STEEL CONTAINER GN 2/1 530X650X65H
80300528	GASK-S9	WATER-TIGHT GASKET FOR S900 MODELS
440161-NA	9FP-NA	BLOCK PANS FOR ELECTRIC RANGE

CODE	MODEL	TYPE	POWER SUPPLY	SERIES
10191021	M9CQE02-NA	GAS RANGE	ELECTRIC	MILO MARINE 900

DESCRIPTION

ELECTRIC RANGE WITH 2 SQUARE PLATES

TECHNICAL DRAWING



CONNECTIONS

E = ELECTRIC	400V/3/50-60Hz
E = ELECTRIC	440V/3/50-60Hz